



AlonA Hotel

Access Statement



AlonA Hotel
Strathclyde Country Park,
Hamilton Road,
Motherwell ML1 3RT

T: 01698 333888
E: reservations@alonahotel.co.uk

June 2015

Access Statement for Alona Hotel - Strathclyde Park

Contents

| | |
|---|----|
| Welcome | 3 |
| Pre-Arrival..... | 4 |
| Arriving by Car | 4 |
| Travelling by Rail..... | 5 |
| Airbles Train Station..... | 5 |
| Motherwell Train Station | 5 |
| Bellshill Train Station | 5 |
| Hamilton Central Train Station | 5 |
| Arriving by Bus / Taxi..... | 6 |
| Car Parking | 7 |
| Main Entrance / Reception / Welcome Area..... | 9 |
| Bedrooms | 10 |
| Bathrooms, Shower-rooms and Toilets (En-suite)..... | 11 |
| Public Areas - Halls, Stairs, Landings, Corridors | 11 |
| Public Areas - Lounges, Lobbies..... | 12 |
| Public Toilets..... | 14 |
| Conference and Meeting Rooms..... | 15 |
| Marquee..... | 16 |
| Additional Information..... | 18 |
| Future Plans..... | 18 |
| Local Information..... | 18 |
| Contact Information..... | 18 |

Welcome

At the AlonA, we have a number of suites and facilities to suit all our guests, from our fabulous new banqueting suite, ideal for weddings, to our state-of-the-art conference suites.

Relax and unwind in one of our 51 bedrooms including three accessible rooms which are all designed to make your stay as enjoyable and stress free as possible.

The AlonA Hotel has a good relationship with Alzheimer's Scotland and offers regular lunches for people with Dementia and Alzheimer's and is Scotland's first dementia friendly hotel. Practical changes have been made to make the environment of the hotel easier for people of varying access needs. Moreover staff are trained to welcome and accommodate all visitors to the hotel.

Pre-Arrival

The AlonA hotel is situated within Strathclyde Country Park, the boundary of the park is serviced by public transport however currently services do not run through the park. The Alona is approximately 2.5 miles from the park entrance.

Arriving by Car

Junction 5 off the M74 - follow signs for Strathclyde Country Park. Once within the park follow the road for 300 yards where you will see our unique Glasshouse Restaurant and hotel. For full details and maps of how to reach us please see the directions section of our website. If you are using satellite navigation our postcode is ML1 3RT

Travelling by Rail

Airbles Train Station

Accessible for wheelchair users

No accessible toilets at the station

The distance from Airbles Train Station to Strathclyde Country Park entrance is 3 miles

Motherwell Train Station

Accessible for wheelchair users

No accessible toilets at the station

The distance from Motherwell Station to Strathclyde Country Park entrance is 2.7 miles

Bellshill Train Station

Accessible for wheelchair users

No accessible toilets at the station

The distance from Bellshill Train Station to Strathclyde Country Park entrance is 2.5 miles

Hamilton Central Train Station

Accessible for wheelchair users

No accessible toilets at the station

The distance from Hamilton Central Train Station to Strathclyde Country Park entrance is 2.8 miles

More information at www.nationalrail.co.uk

Helpline: 0800 912 2901 18001 0800 912 2901 (hearing impairment)

Arriving by Bus / Taxi

The boundary of Strathclyde Country Park is served by local bus routes which stop close to the park, however local buses do not run through the park. Please Note – Visitors would have to walk from the park boundary or take a taxi from train or bus stop.

Hamilton Central or Motherwell Stations - 41, 56, 107/109, 201, 253 and 266, all of which run between neighbouring towns.

Please check <http://www.firstgroup.com> for bus availability and timetables

A seasonal bus X7 runs direct from Buchanan Bus Station to M and D's. Please check <http://www.firstgroup.com> to confirm availability.

<http://www.travelinescotland.com/welcome.do>

Travelling by Taxi

There are a variety of local taxi companies in the area

Club Taxi's - 01698 834545

Can accommodate wheelchairs, buggies and assistance dogs

Penny Cars - 01236 752752

Can accommodate wheelchairs, buggies and assistance dogs

Red Line Cab's - 01698 261330

Advance booking required can accommodate wheelchairs, buggies and assistance dogs

Maxi's Taxi's - 01698 842525

Advance booking required can accommodate wheelchairs, buggies and assistance dogs

Car Parking

There is onsite parking with 63 spaces including 4 spaces clearly identified for Blue Badge holders only.

Parking is free for guests

The car park surface is tarmac with a mono-block path leading to the main entrance.

There is a dropped kerb at the path and a very slight incline towards the main entrance

The car park type is open air/surface

You do not have to cross a road.

The car park does not have a height restriction barrier

The car park has lighting at night



Main Entrance / Reception / Welcome Area

Double automatic doors, opening in and measuring at 130cm/ 51in wide

Reception is on the ground floor and has level access throughout.

The floor surface throughout the lobby is marble.

The area is evenly and well lit with overhead lighting and wall lights.

There is a lowered section at the check-in desk.

There is a choice of seating in the lobby area, which can be used as an alternative space for check-in

A familiarisation tour is available on request





Bedrooms

There are 3 accessible bedrooms

There is a good contrast on the signs throughout the hotel

All entry doors are 33.5ins wide; doors are heavy and open in.

There is ample space in our accessible rooms to move around in and there is some movable furniture which can be moved/ removed on request and the fixed furniture is wall mounted.

There is a non-movable desk within the room which measures at 28" from the ground

Carers will be accommodated in the next nearest room and there is not complimentary carer policy.

The space at either side of the bed is 30" to the right and 62" to the left. The height of the bed is 27" and there is no under-bed space.

The rooms are bright with plenty of additional lamps throughout and a window

The doors are dark oak and the frames are white providing a good contrast

The wardrobe space is open and the clothing rails are located at 55" and 73" from the ground these rails are non adjustable there are also shelves and drawers within the wardrobe area.

The room is carpeted with a thick pile orange and grey carpet

TV's in the rooms have subtitles and can be switched on using the remote control

There are telephones within the rooms

There is a siren, flashing light and vibration pillow for the fire alarm.

There is an emergency cord in the bathroom



Bathrooms, Shower-rooms and Toilets (En-suite)

Room 101 has a wet room with shower; the other two accessible rooms have baths' with the shower over the bath

There is level access from the bedroom to shower room the door opening is 35" wide

The room is a wet room therefore there is no lip to the shower area

The shower in other accessible rooms is over the bath

The height of the WC from floor is 19"

The height of the wash basin is 30" there is clear space under the sink

There are various grab rails located throughout the wet room

There are bright spot lights in the bathroom

The bathroom floor is covered with grey linoleum contrasting with white tiles on the wall

There is an emergency cord

Public Areas - Halls, Stairs, Landings, Corridors

All public areas, halls, stairs, landings and lifts, are well lit using a combination of spot lights on the ceiling and fluorescent lighting is used in the lift.

There is a lift

The lift has audio announcements tactile buttons.

There is a mirror on the back of each lift to aid reversing.

There are also stairs within the hotel these are wide with a dark coloured railing at either side. There are a maximum of 9 steps per landing and there are no seats on the landing areas

Public Areas - Lounges, Lobbies

The lounge area is located on the ground floor to the right of the reception desk and beside the restaurant

There is level access and there are no doors

There is ample space to move between furniture and all furniture is movable

There is sofa style seating and stools with low coffee tables



The area is well lit with spot lights, wall lights and natural day light

There is hard flooring and thick pile carpet throughout; there is a very slight lip where the hard flooring meets the carpet

The nearest accessible toilet is located opposite the main door

Restaurant/Dining Room, Bar & Bar area

Full table service in operation with the exception of Breakfast where there is a buffet available.



There is not a lowered section at bar or buffet counter.

No chairs are permanently fixed.

No chairs have armrests and all have high backs

The distance between the floor and the lowest table is 28"

There is a contrast between the dark tables and the silver cutlery

There is ample room to move amongst the furniture and all furniture is not fixed and adjustable where required.



Menus are hand held only.

Menus are not available in Braille.

Menus can be obtained from our website in word document format

Picture menus are not available.

Menus are clearly written.



Menus are presented in contrasting colours.

The AlonA has Visit Scotlands' Taste Our Best Accreditation on all of our menus' Please make sure that you inform our team of any allergies or dietary requirements before ordering so that we can advise and best accommodate your needs.

Public Toilets

Public toilets can be found on: the ground floor with level access from the main entrance, reception, lounge, bar and restaurant areas; the conference/meeting rooms, on the lower level also use these toilets and they can be reached by a temporary ramp that can be fitted to the stairs.

There are male and female toilets and a unisex accessible toilet in this area.

The toilets are all accessed via a corridor which measures at **XX**

The door opening measures at 32" wide

When facing the WC there is clear space to the left which measures at 44" wide

The WC is 18" from the ground and has horizontal/ vertical grab rails around it.

The area is well lit with bright spot lights

The flooring and wall covering is tiles

The sink has lever taps

There is a pull cord system in case of emergency

There is a flashing light and siren to alert you to evacuate in case of an emergency

Conference and Meeting Rooms

The conference and meeting rooms are located on the lower ground level floor down a set of steps; these steps have hand rails on either side or contrasting edges.

A temporary ramp can be fitted to the stairs for easier access and staff are happy to assist.

All of these rooms have level access throughout.

All doors are double and measure at 43" wide, light and easy to open.

The meeting rooms have no windows and overhead lighting consists of spot lights.

A mobile hearing loop system is available on request??

The flooring is thick pile carpet

All of the furniture within the meeting room is movable and layout can be varied to suit each group

All enquires with regards to meetings should go through reception on 01698 333888

The nearest toilets are located on the ground floor near the reception area

Marquee

We have a permanent marquee which can be hired for special occasions such as weddings, parties and corporate functions. The set up of the furniture is extremely flexible as all the furniture is moveable and can be set up as required.



There is a 'decking style' ramp and stairs that lead to the marquee entrance



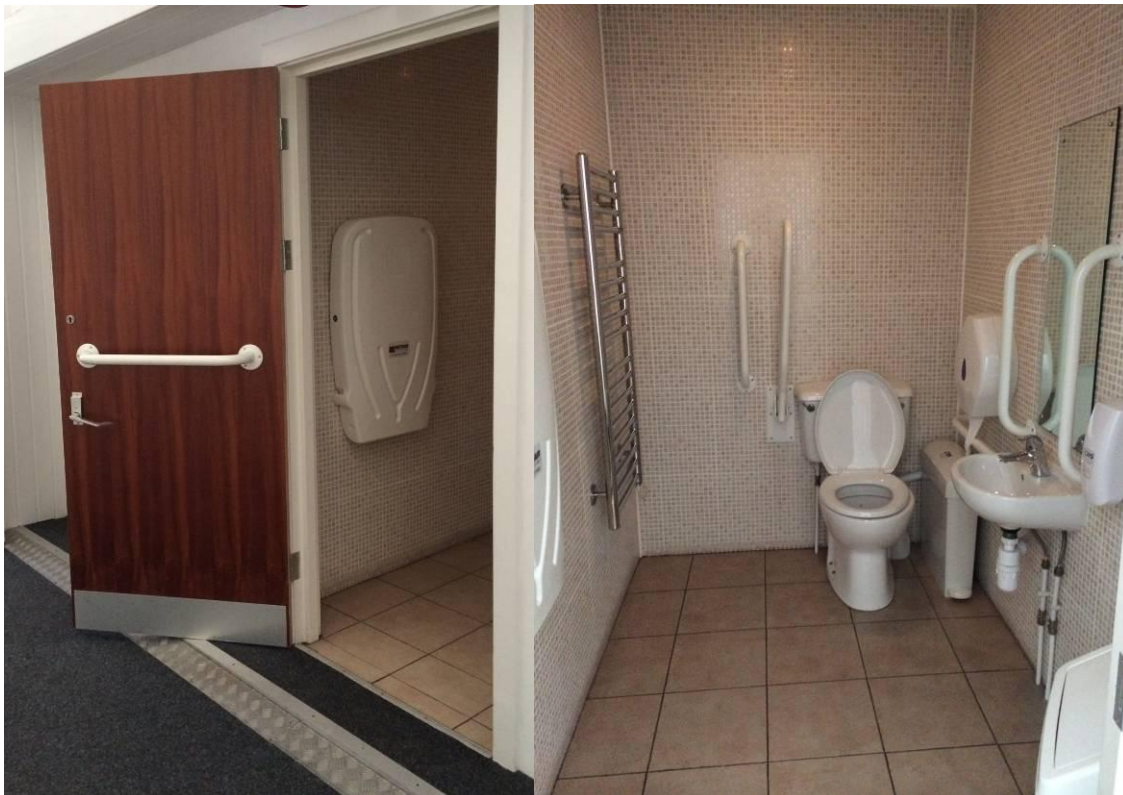
The doors to the marquee measure at 32" wide and there is a small lip into the marquee

The marquee has a thin pile carpet throughout with the exception of the dance floor area which is hard flooring and has a small ramp to enter

There are male, female and a unisex accessible toilet located to the top right of the marquee as you enter.

The accessible toilet also contains baby change facilities.

The door to the accessible toilet measures at 29" and there is a small lip at the entrance



Additional Information

All assistance dogs welcome – Please inform us as early as possible to allow us to accommodate any specific requests

Nearby

M&D's Theme Park – 0 miles

Amazonia – 0 miles

Watersport's Centre – 0.5 miles

We hope that this information pack has been useful, should you require any further information please do not hesitate to contact us using the contact details below.

Future Plans

Local Information

There are to be significant improvements to the M73, M74 and M8, due for completion in spring 2017. If you are travelling by car it is likely that these roadworks' will have an impact on your journey to Strathclyde Country Park. More information on the upgrades can be found here;

www.transportscotland.gov.uk/m8m73m74.

Additionally you can receive live traffic updates at

<http://trafficscotland.org/>

Contact Information

Address: Strathclyde Country Park, Hamilton Road,
Motherwell ML1 3RT

Telephone: 01698 333888

Email: reservations@alonahotel.co.uk

Website: <http://alonahotel.co.uk/>

Hours Of Operation: 24hrs 7day's

Local Equipment Hire: Mobility Scotland Tel: 0141 775 0396 or 0845 521 3153 Email: info@mobilityscotlandltd.co.uk <http://mobilityscotlandltd.co.uk/>

Local Accessible Taxi: There are a variety of local taxi companies in the area

Club Taxi's - 01698 834545

Can accommodate wheelchairs, buggies and assistance dogs

Penny Cars - 01236 752752

Can accommodate wheelchairs, buggies and assistance dogs

Red Line Cab's - 01698 261330

Advance booking required can accommodate wheelchairs, buggies and assistance dogs

Maxi's Taxi's - 01698 842525

Advance booking required can accommodate wheelchairs, buggies and assistance dogs

Local Public Transport: All local and up to date travel information can be found at Travel Line Scotland; <http://www.travelinescotland.com/welcome.do> 0871 200 2233 Travel Line Scotland also have an app for smart phones